



ORBINOX

VALVE SOLUTIONS IN MORE
THAN 70 COUNTRIES

MORE THAN 55 YEARS

ORBINOX is present in more than 70 countries with over 55 years of experience designing, manufacturing and marketing knife gate valves, penstocks, dampers, and valves for hydraulic works

ORBINOX was founded in Tolosa in 1964, manufacturing industrial valves to fulfill the increasing demand of the local paper industry.

In 1987, in order to satisfy the demand of new markets ORBINOX relocated to a new factory in Anoeta and introduced special products such as dampers and valves for hydraulic works.

In the late 90's ORBINOX decided to focus on improving standard valves as core business.

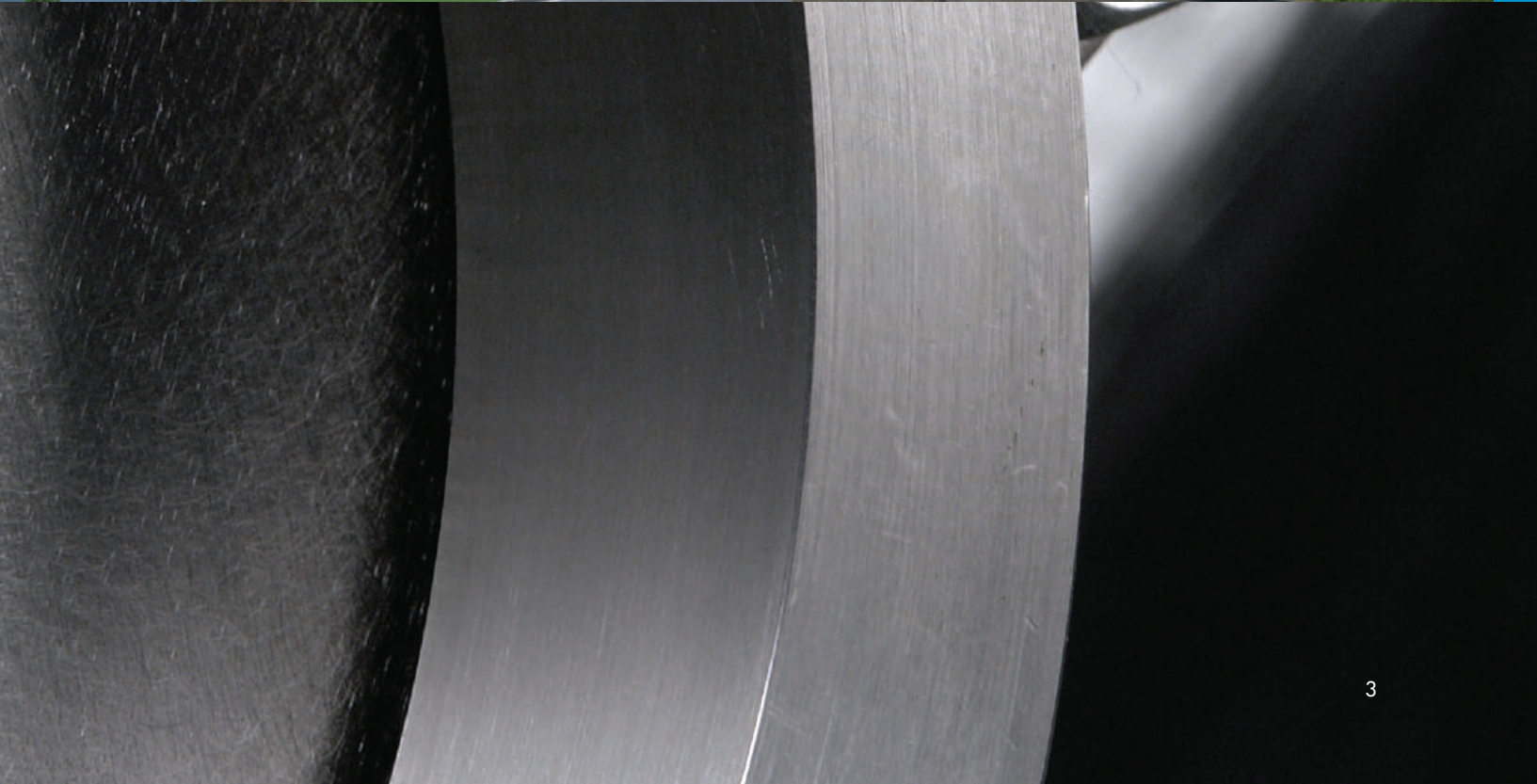
In the early 2000's began a period of change and expansion. Organized into two business units (Knife gate valves and Special products), ORBINOX established manufacturing and distribution subsidiaries in Canada and USA, United Kingdom, India, Spain, France, China and Germany.

In 2007, as result of an organizational restructuring within the Group, ORBINOX VALVES INTERNATIONAL was established.

In the late 2000's ORBINOX Brazil and South East Asia were established and a majority shareholding of DAMPER TECHNOLOGY Ltd in the UK acquired.

In 2011, ORBINOX became a member of the AVK Group

In 2015, a new distribution center in Chile was established, in 2016 ORBINOX France was constituted and ORBINOX Peru has been established in 2017.



OUR WAY TO SUCCESS

ORBINOX is the world wide leading knife gate valve manufacturer. Our continued market leadership is the result of staying true to our Mission, Vision and Values

Product quality and customer satisfaction are our goals. We offer a wide range of valves, penstocks and dampers which cover a variety of applications. We have a highly qualified and experienced team providing the best solutions to suit the needs of our customers.

Our production plants are equipped with the most up to date machinery which, combined, with our modular product design and production to order system, allows us to be highly flexible with specifications and delivery times.

Currently we are present in over 70 countries across the five continents, enabling us to be close to our customers in order to offer technical advice and respond to their requirements. We think globally, whilst applying local expertise.





7 manufacturing plants, 15 sales and distribution centers, distribution worldwide

BUSINESS SEGMENTS

ORBINOX supplies a wide range of products for demanding applications in various business segments, the most significant being Water & Waste Water Treatment, Mining, Power Generation, Pulp & Paper and Air Separation



WATER TREATMENT



PETROCHEMICAL



FOOD & BEVERAGE



AIR SEPARATION



POWER GENERATION



STEEL INDUSTRY



DAMS, RESERVOIRS
& HYDRO SOLUTIONS



PULP & PAPER



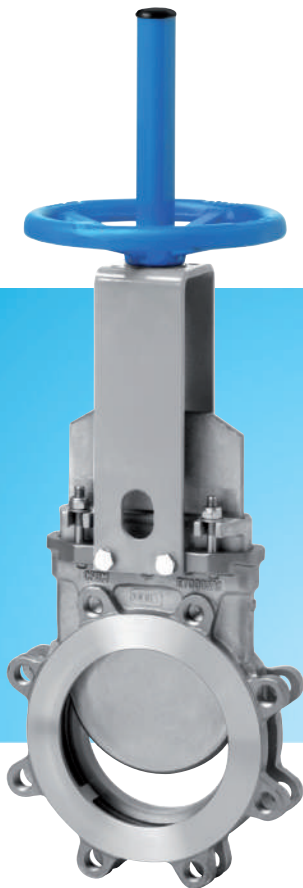
MINING

PRODUCTS

KNIFE GATE VALVES

SER.20 (ET)

Knife gate valve
acc. to MSS SP-81



SER.22 (BT)

Bi-directional knife gate
valve acc. to MSS SP-81



SER.10 (EX)

Wafer knife gate valve



	SER.20 (ET)	SER.22 (BT)	SER.10 (EX)
APPLICATION	General service (solid loaded fluids) Pulp&paper, waste water, solids...	General service (solid loaded fluids) Pulp&paper, waste water, solids...	General service (solid loaded fluids) Pulp & paper, waste water, solids...
SIZES	2" to 36" (DN 50 to DN 900)	2" to 36" (DN 50 to DN 900)	2" to 48" (DN 50 to DN 1200)
WORKING PRESSURE	2" - 24" (150 psi) DN 50 - DN 600 (10 bar) 30" (100 psi) DN 750 (7 bar) 36" (100 psi) DN 900 (7 bar)	2" - 24" (150 psi) DN 50 - DN 600 (10 bar) 30" (100 psi) DN 750 (7 bar) 36" (100 psi) DN 900 (7 bar)	2"-10" (150 psi)/DN 50 - 250 (10 bar) 12"-16" (90 psi)/DN 300 - 400 (6 bar) 18" (75 psi)/DN 450 (5 bar) 20" - 24" (60 psi)/DN 500 - 600 (4 bar) 28" - 48" (30 psi)/DN 700 - 1200 (2 bar)
FLANGE DRILLING	ANSI 150 PN10	ANSI 150 PN10	ANSI 150 PN10

Note: larger diameters, higher pressures and/or other flange drilling on request.

KNIFE GATE VALVES

SER.61 (VG)

Rubber sleeve
knife gate valve



SER.65 (WG)

Rubber sleeve
knife gate valve



SER.68 (HG)

Rubber sleeve knife gate valve
High pressure



	SER.61 (VG) / SER.65 (WG)	SER.68 (HG)
APPLICATION	Abrasive slurries (mining, petrochemical...)	Abrasive slurries (mining, petrochemical...)
SIZES	2" to 36" (DN 50 to DN 900)	3" to 36" (DN 80 to DN 900)
WORKING PRESSURE	2"-16" (150 psi)/DN 50 - 400 (10bar) 18"-24" (90 psi or 150 psi)/DN 450 - 600 (6 bar or 10 bar) 28"-36" (75psi or 150psi)/ DN 700 - 900 (5 bar or 10 bar)	3"-36" (300 psi)/DN 80 - 900 (20 bar)
FLANGE DRILLING	ANSI 150 PN10	ANSI 150/300 PN16/25

Note: larger diameters, higher pressures and/or other flange drilling on request.

KNIFE GATE VALVES

SER.11 (EB)

Bi-directional knife gate valve



SER.30 (TL)

Through conduit knife gate valve



SER.70 (CR)

Round & Square port knife gate valve



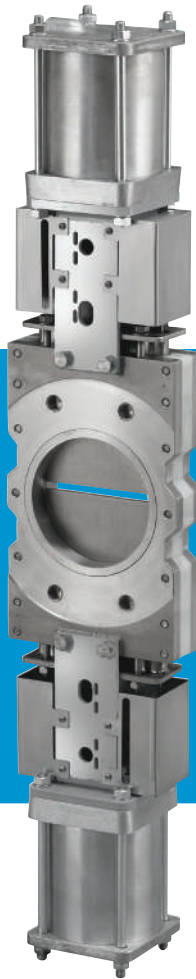
	SER.11 (EB)	SER.30 (TL)	SER.70 (CR)
APPLICATION	General service (solid loaded fluids) waste water, sludges...	Solid loaded fluids (concentration > 5%) pulp, rejects, solids...	Contaminated pulp and difficult conditions (junk traps, cleaners...)
SIZES	2" to 48" (DN 50 to DN 1200)	2" to 40" (DN 50 to DN 1000)	4" to 24" (DN 100 to DN600)
WORKING PRESSURE	2"-10" (150 psi)/DN 50 - 250 (10 bar) 12"-16" (90 psi)/DN 300 - 400 (6 bar) 18" (75 psi)/DN 450 (5 bar) 20"-24" (60 psi)/DN 500 - 600 (4 bar) 28"-48" (30 psi)/DN 700 - 1200 (2 bar)	2"-5" (150 psi)/DN 50 -125 (10 bar) 6"-10" (115 psi) DN 150 - 250 (8 bar) 12"-16" (90 psi)/DN 300 - 400 (6 bar) 18" (75 psi)/DN 450 (5 bar) 20"-24" (60 psi)/DN 500 - 600 (4 bar) 28"-40" (30 psi)/DN 700 -1000 (2 bar)	4"-16" (100 psi)/DN 100 - 400 (7 bar) 20"-24" (60 psi)/DN 500 - 600 (4 bar)
FLANGE DRILLING	ANSI 150 PN10	ANSI 150 PN10	ANSI 150 PN10

Note: larger diameters, higher pressures and/or other flange drilling on request.

KNIFE GATE VALVES

SER.80 (DT)

Double gate
knife gate valve



SER.14 (XC)

Hopper shape
knife gate valve



SER.90 (BC)

Square port
knife gate valve



	SER.80 (DT)	SER.14 (XC)	SER.90 (BC)
APPLICATION	Contaminated pulp or very high concentration (pulp, rejects...)	Bulk handling (powder, pellets...) silo outlet applications	General service (solid loaded fluids) bulk handling
SIZES	4" to 24" (DN 100 to DN 600)	2" to 24" (DN 50 to DN 600)	6"x6" to 24"x24" (150x150 to 600x600)
WORKING PRESSURE	4"-10" (150 psi)/DN 100 - 250 (10 bar) 12"-16" (90 psi)/DN 300 - 400 (6 bar) 18" (75 psi)/DN 450 (5 bar) 20"-24" (60 psi)/DN 500 - 600 (4 bar)	Opposite seat pressure 2"-10" (45 psi)/DN 50 - 250 (3 bar) 12"-16" (30 psi)/DN 300 - 400 (2 bar) 18" (23 psi)/DN 450 (1,5 bar) 20"-24" (15 psi)/DN 500 - 600 (1 bar)	6"x6" (150x150) -24"x24" (600x600) (15 psi) (1 bar)
FLANGE DRILLING	ANSI 150 PN10	ANSI 150 PN10	ORBINOX Standard

Note: larger diameters, higher pressures and/or other flange drilling on request.

ACTUATORS

MANUAL

Handwheel
(rising stem)



Handwheel
(non-rising stem)

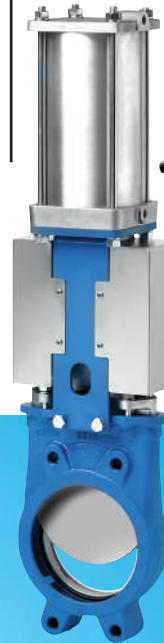


Lever

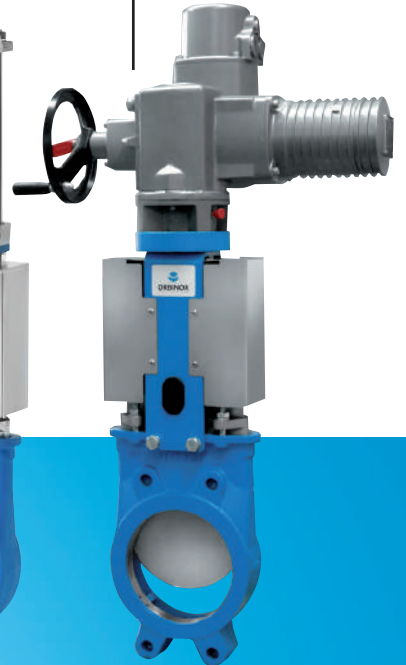


AUTOMATED

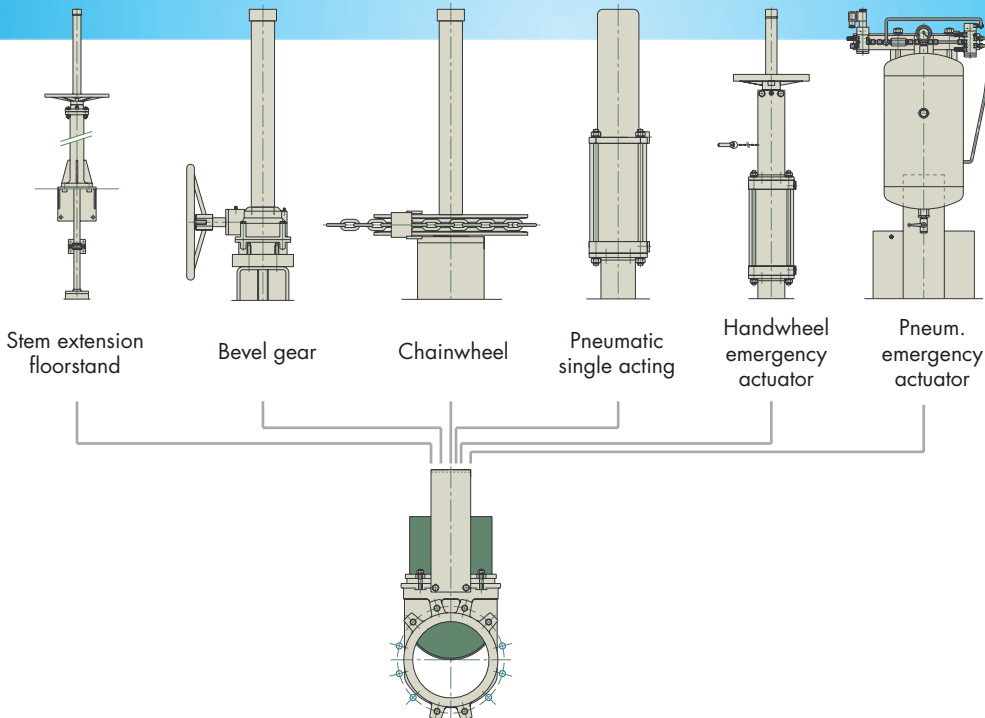
Pneumatic
double-acting



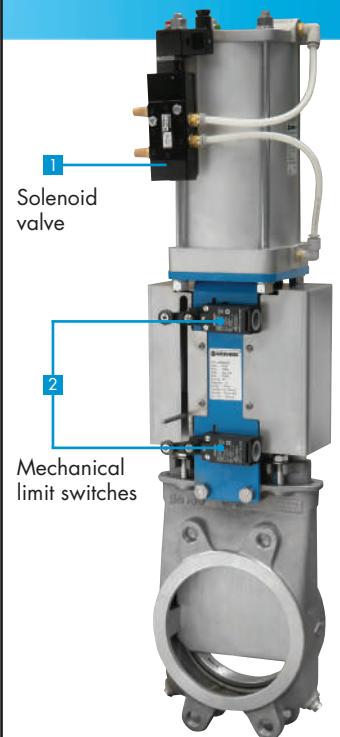
Electric



MORE ACTUATORS



ACCESSORIES



DESIGN & MATERIALS

SER.10/SER.20/SER.30 (EX/ET/TL)

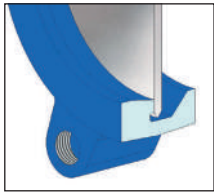
BODY
Cast Iron EN-GJL250
Stainless Steel CF8M

A/B/C RINGS
CF8M Stainless
CA15
NiHard

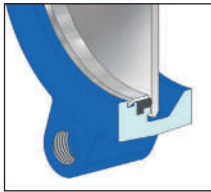
GATE
Stainless Steel AISI 304
Stainless Steel AISI 316

Other materials
on request

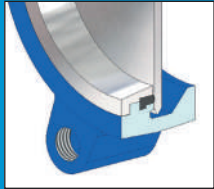
SEATING OPTIONS



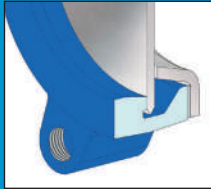
Metal to metal



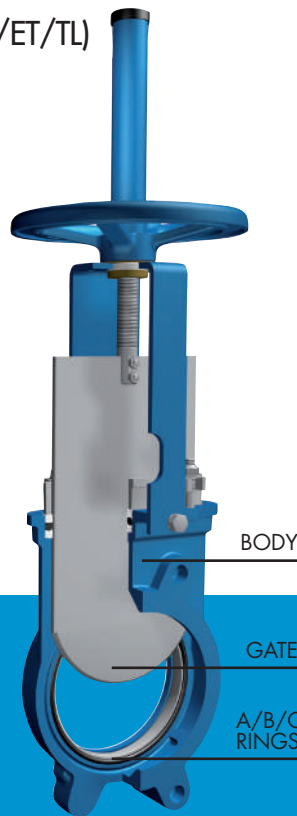
Resilient A type
(standard)



Resilient B type
(reinforced)



Deflection cone C
type



BODY

GATE

A/B/C
RINGS

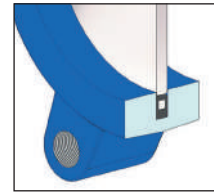
SER.11 (EB)

BODY
Cast Iron EN-GJL250
GJS 400 (GGG40)
Stainless Steel CF8M

GATE
Stainless Steel AISI 304
Stainless Steel AISI 316

Other materials
on request

SEAT

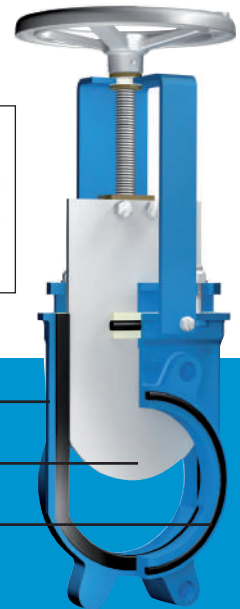


Resilient seat

BODY

GATE

O-RING



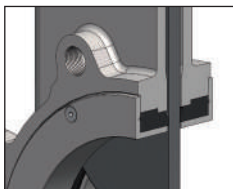
SER.22 (BT)

BODY
Stainless Steel CF8M

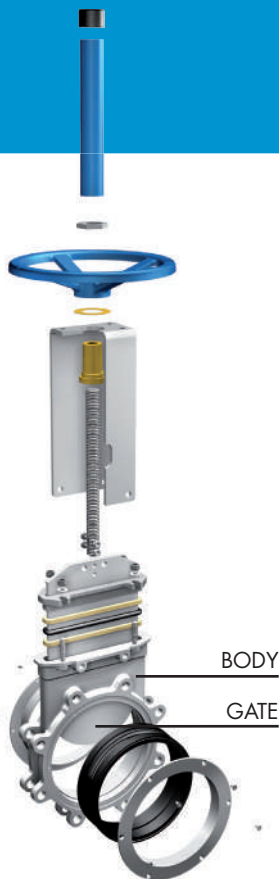
GATE
Stainless Steel AISI 316

Other materials
on request

SEAT



Resilient seat



BODY

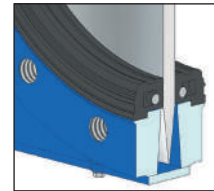
GATE

SER.61/SER.65/SER.68 (VG/WG/HG)

BODY
Ductile iron (60-40-18)
EN-GJS400-18

GATE
Stainless Steel AISI 304
Stainless Steel 17-4 PH
Duplex

SEAT



Rubber sleeves

BODY

GATE

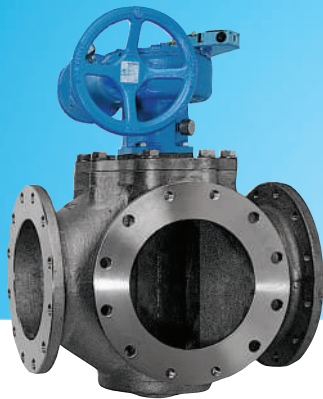
Other materials
on request



OTHER STANDARD VALVES

SER.35 (RM)

Tilting disc
check valve



3/4V

3/4 way valve

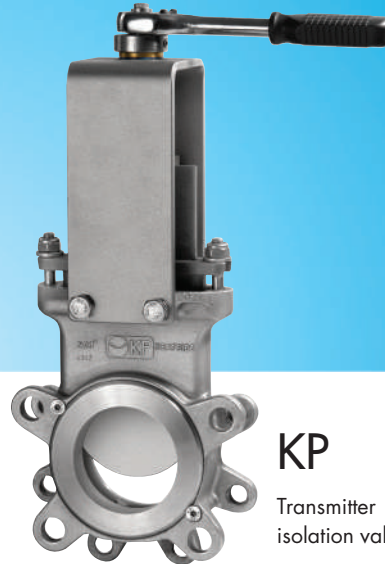
VP

Split body
bi-directional
knife gate valve



SER.45 (TP)

Sampling valve



KP

Transmitter
isolation valve



	SER.35 (RM)	3/4V	VP	SER.45(TP)	KP	BONNETED VALVES
APPLICATION	Solid loaded fluids pulp & paper, waste water	Pulp & paper	Demanding applications bi-directional	Pulp & paper	Transmitter isolation valve	Solid loaded / hazardous fluids available for SER.10 (EX), SER.20 (ET), SER.30 (TL), SER.14 (XC)
SIZES	1 1/2" to 36" (DN 40 to DN 900)	3" to 12" (DN 80 to DN 300)	2" to 24" (DN 50 to DN 600)	1"/1 1/2" (DN 25/40)	3" (DN 80)	up to 24" (up to DN 600)
WORKING PRESSURE	1 1/2"-12" (582 psi)/ DN 40-300 (40 bar) 14"-24" (375 psi)/ DN 350-600 (25 bar) 28"-36" (150 psi)/ DN 700-900 (10 bar)	150 psi (10 bar)	150 psi (up to 10 bar) depending on size	150 psi (10 bar)	150 psi (10 bar)	150 psi (up to 10 bar) depending on size

SPECIAL ENGINEERED VALVES

SER.50 (CW)

Single wedge
knife gate valve



WS

Fabricated single wedge
knife gate valve

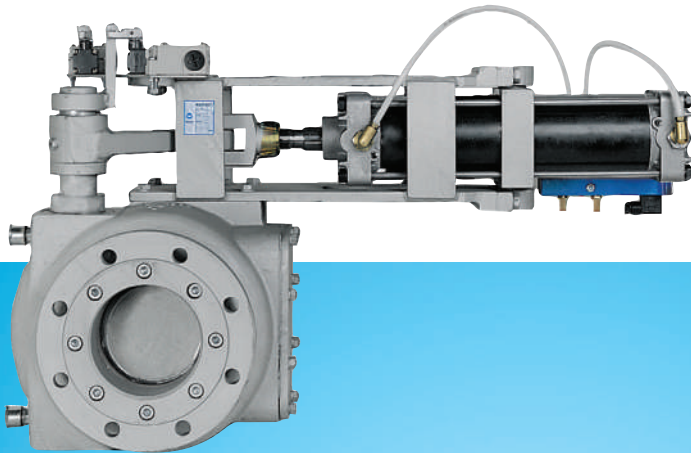


	SER.50 (CW)	WS
APPLICATION	Solid loaded / hazardous fluids high pressure	Solid loaded / hazardous fluids high pressure
SIZES	3" to 36" (DN 80 to DN 900)	Up to 96" (up to DN 2400)
WORKING PRESSURE	1500 psi (up to 100 bar) depending on size	582 psi (up to 40 bar) depending on size

SPECIAL ENGINEERED VALVES

SD

Swing disc valve



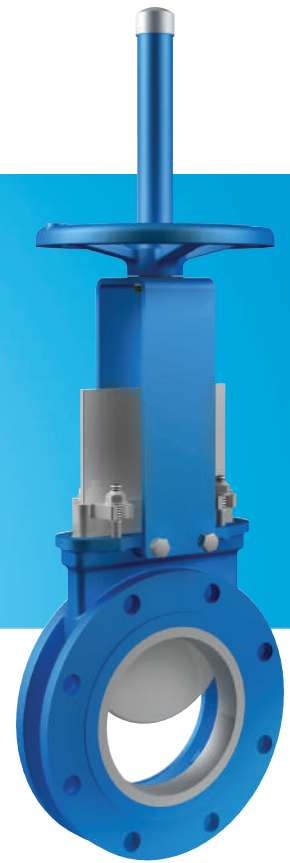
BX

Coal burner isolation
(ATEX Cat.1)
acc. DIN EN 14460



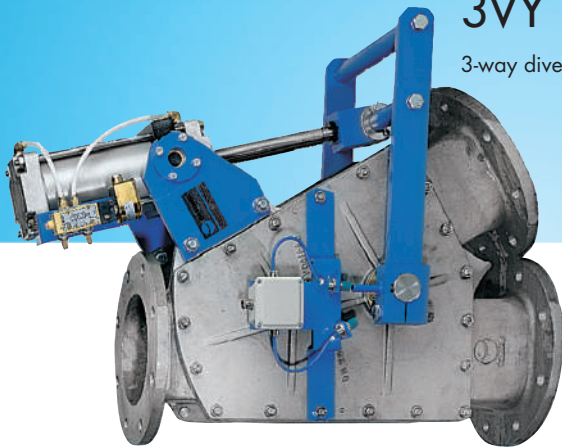
CX

Burner shut-off
acc. NFPA-85



3VY

3-way diverter valve



	SD	3VY	BX	CX
APPLICATION	Bulk handling abrasive services (fly ash, etc.)	Bulk handling	Coal feeding systems	Burner shut-off
SIZES	4" to 12" (DN 100 to DN 300)	2" to 10" (DN 50 to DN 250)	28" to 40" (DN 700 to DN 1000)	10" to 30" (DN250 to DN750)
WORKING PRESSURE	45 psi (up to 3 bar)	45 psi (up to 3 bar)	45 psi (28" to 40") 3 bar (DN 700 to DN 1000)	50 psi (10" to 30") 3,5 bar (DN 250 to 750)

PENSTOCKS

MU Wall Penstocks (4-sided sealing), CC Channel Gates (3-sided sealing), RB Weir Gates Stainless Steel Stop Logs. Mainly used in waste water treatment plants, irrigation, hydro powerstations, ...

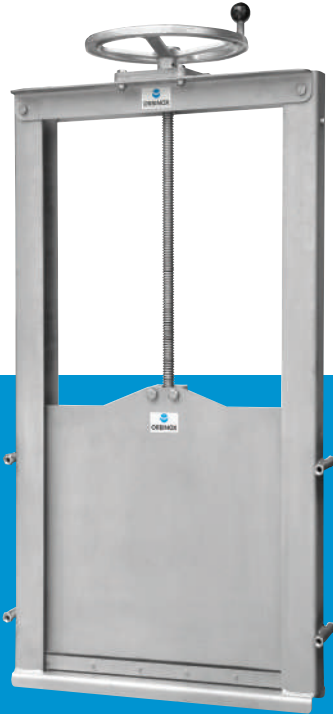
Fabricated in stainless steel construction, with an elastomer sealing for substantially watertight shut-off.

Available in a wide range of dimensions and design pressures with either handwheel, pneumatic, electric or hydraulic actuators.

ORBINOX manufactures according to the AWWA C561, DIN 19569 & BS 7775 standard and fulfills the requirements of Directive 94/9/CE (ATEX), Group II Category 2 (Zone 1).

CC

Channel Penstock
DIN/AWWA –
up to 140"/3500mm
stainless steel



MU

Wall Penstock
DIN/AWWA –
up to 160"/4000mm
stainless steel



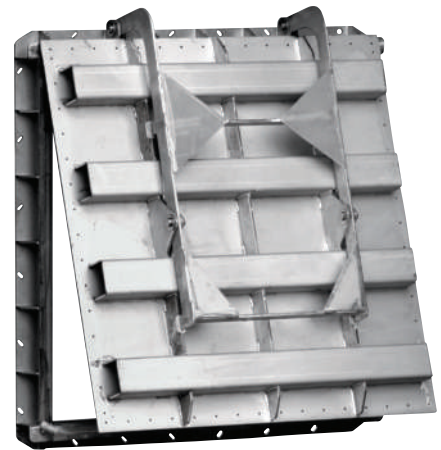
RB

Weir Penstock
up to 100"/2500mm
stainless steel



SL/SA

Stop Log
up to 80"/2000mm
stainless steel / aluminum



RR/RC

Flap Gate
round and rectangular
stainless steel

SPECIAL ENGINEERED VALVES AND DAMPERS

Special fabricated valves such as the three-lever MP valve with pneumatic actuator used in air separation plants and the GF Goggle Valve with hydraulic actuator used in the exhaust and gas systems of steel plants.

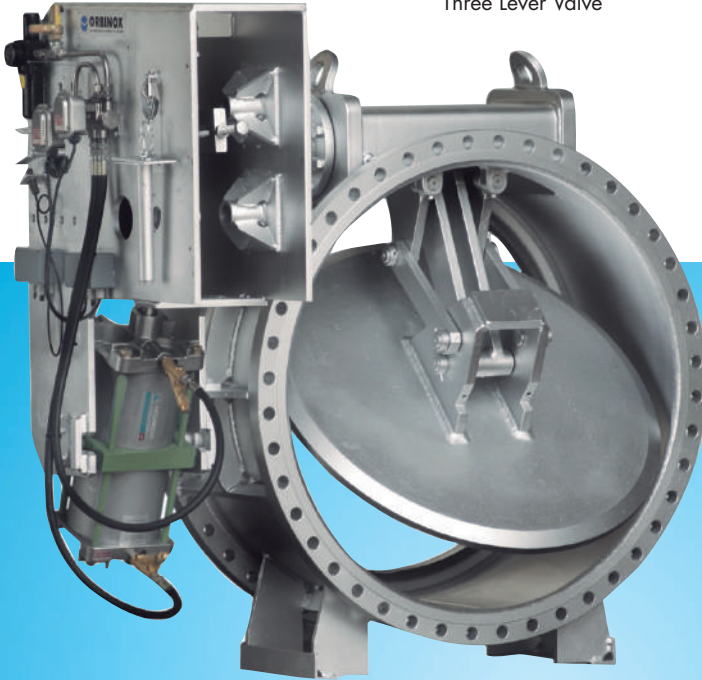
Light-construction fabricated dampers for low pressure and high temperature gas/air flow diverting, isolation or regulation. Wide variety of different designs (ML butterfly damper,

PE louver damper, DI/DV diverter dampers, DG guillotine damper, ST stack damper, etc.), with multiple construction materials and for diverse applications such as power generation systems, gas cleaning systems, cement plants, stack isolation, etc.

Available with pneumatic, electric, hydraulic or manual actuators.

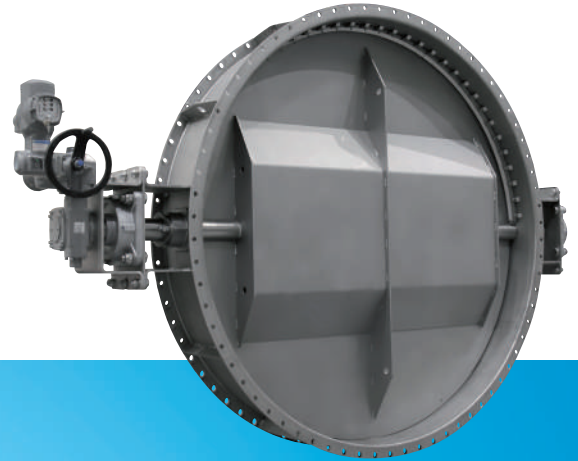
MP

Three Lever Valve



ML

Butterfly Damper



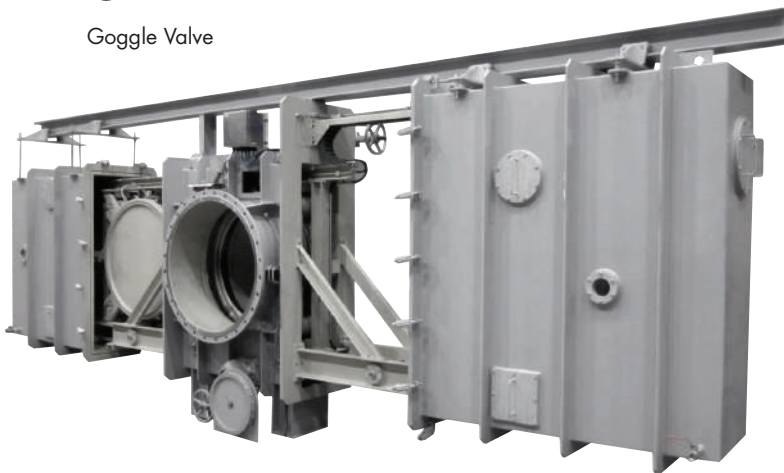
PE

Louver Damper



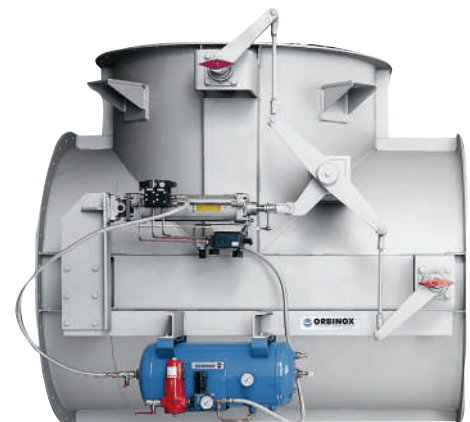
GP

Goggle Valve



DI

Multiple Diverter Damper



VALVES FOR HYDRAULIC WORKS

ORBINOX designs and manufactures special valves and gates for regulating and closing flow through the outlet works of dams, and ducts in pumping and hydro power stations.

Rugged fabricated construction, available

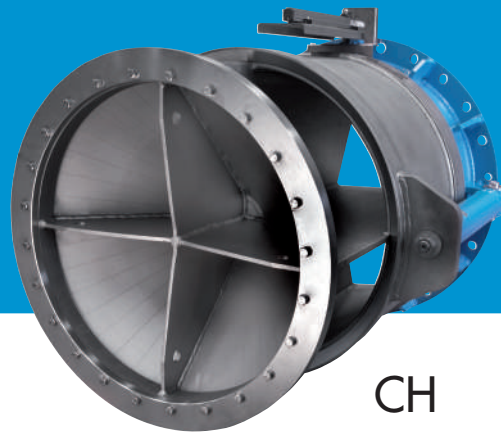
in a wide range of sizes and special materials to match specific requirements and depending on the head under which the valve will operate.

Available with hydraulic, electric or manual actuators.



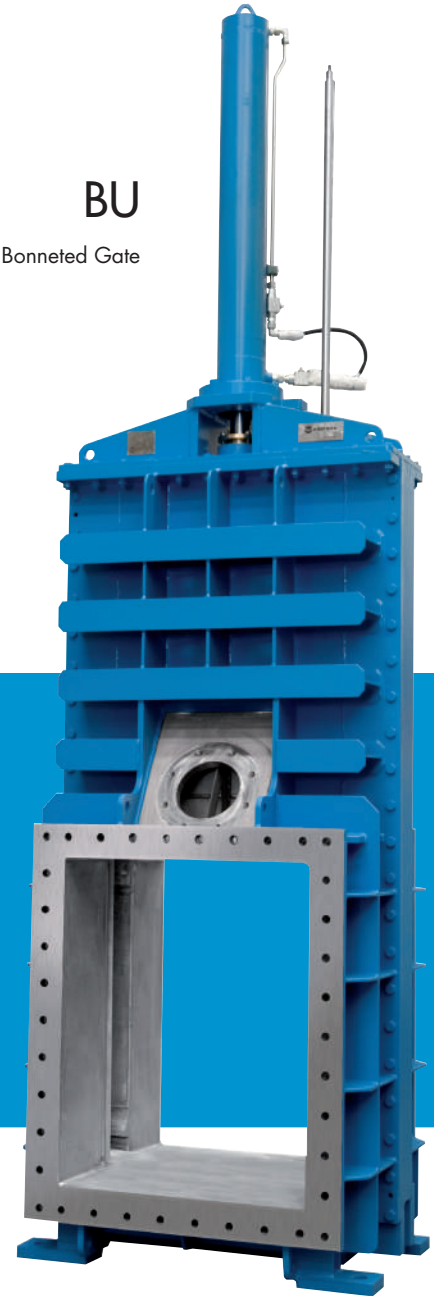
WS

Fabricated Single Wedge



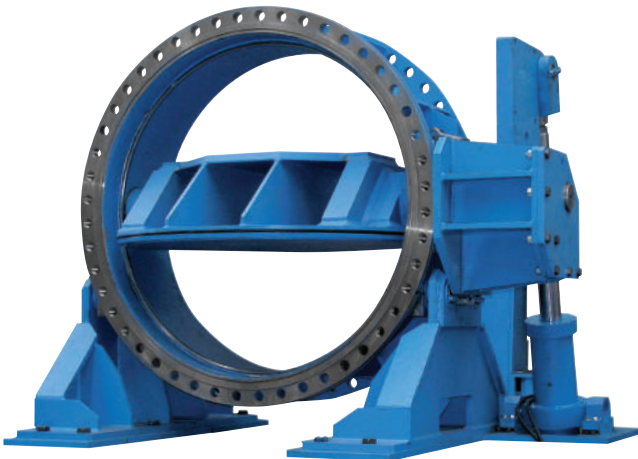
CH

Fixed Cone Valve



BU

Bonneted Gate



MB

Double Eccentric Butterfly Valve



CT

Radial Gate



ORBINOX

VALVE SOLUTIONS IN MORE THAN 70 COUNTRIES

MEMBER OF THE **AVR** GROUP

ORBINOX VALVES INTERNATIONAL

Parque Tecnológico de San Sebastián
P^o Mikeletegui, 71- planta 1^a
20009 DONOSTIA-SAN SEBASTIAN, SPAIN
Tel. + 34 943 69 80 30
Fax: + 34 943 30 92 83
e-mail: ovi@orbinox.com

EUROPE

ORBINOX S.A.

ANOETA, GIPUZKOA • SPAIN
orbinox@orbinox.com

ORBINOX UK

CHICHESTER, WEST SUSSEX • UK
uk@orbinox.com

ORBINOX COMERCIAL

BELAUNTZA, GIPUZKOA • SPAIN
comercial@orbinox.com

ORBINOX GERMANY

SCHWERTE, NRW • GERMANY
germany@orbinox.com

ORBINOX FRANCE

GENAS, REGION LYONNAISE • FRANCE
france@orbinox.com

DAMPER TECHNOLOGY

EASTWOOD, NOTTINGHAM • UK
sales@dampertechnology.com

ASIA

ORBINOX CHINA

BEIJING / SHANGHAI • CHINA
china@orbinox.com

ORBINOX INDIA

COIMBATORE, TAMIL NADU • INDIA
india@orbinox.com

DAMPER TECHNOLOGY

COIMBATORE, TAMIL NADU • INDIA
sales.india@dampertechnology.com

AMERICA

ORBINOX CANADA

LAVAL, QUEBEC • CANADA
canada@orbinox.com

ORBINOX USA

AMORY, MISSISSIPPI • USA
usa@orbinox.com

ORBINOX BRAZIL

INDAIATUBA, SÃO PAULO • BRAZIL
brasil@orbinox.com

ORBINOX CHILE

SANTIAGO • CHILE
chile@orbinox.com

ORBINOX PERU

LIMA • PERU
peru@orbinox.com

www.orbinox.com

